

# TOURATECH

TOURING RALLYE RACING TECHNOLOGY

01-040-0662-1

KTM Lc8 GPS mount adapter

## Contents:

- 1 x GPS mount adapter (black)
- 1 x Expander (silver)
- 2 x Spacers
- 1 x Screw kit
- 2 x Black rubber pads



## CAUTION!!

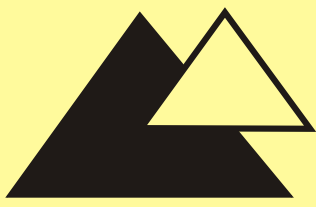
The battery must be disconnected when performing this installation.

Remove the side fairing pieces on both sides by removing the screws in Figure 2



Remove the headlight from the attachment points as show in Figure 3, disconnect the wiring and remove the headlight unit.





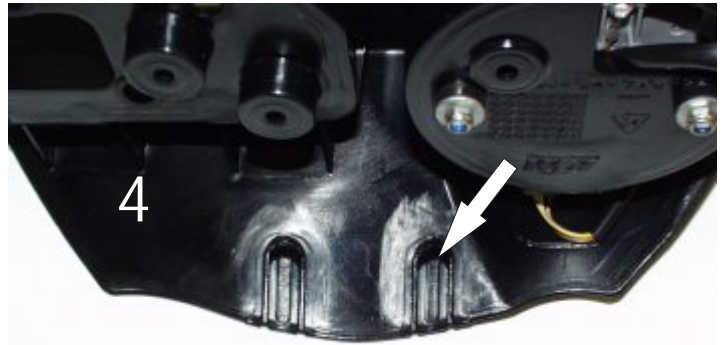
# TOURATECH

TOURING RALLYE RACING TECHNOLOGY

01-040-0662-1

KTM Lc8 GPS mount adapter

Drill and cut the marked recess on the cockpit fairing (can be seen next to the windshield) approx. 17mm long and 13mm wide as shown in Figure 4-5.

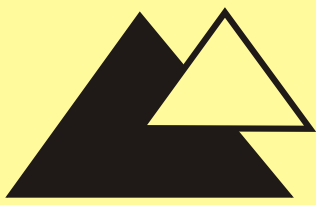


Black cockpit cover shown from inside.

Install the expander with the two M6x16 screw, washer, and nylock as shown in Figure 6 on the cockpit support.

Leave screws loose for now. Install the rubber pads on the bottom of the lower piece of the GPS adapter (the piece without the round bar) as seen in figures 8-10.





# TOURATECH

TOURING RALLYE RACING TECHNOLOGY

## 01-040-0662-1

### KTM Lc8 GPS mount adapter

Set the two spacers through the holes you have cut in the cockpit fairing as shown in Figure 7.

Set the lower piece of the GPS mount adapter (the piece without the round bar) on the spacers as shown in Figure 7 and fasten through the spacers, the expander under the cockpit fairing, and the mount adapter on top with the two M6x30 screws, washers and nylock nuts. Leave it loose for now. Attach the upper piece of the GPS holder (the piece with the round bar) as shown in Figure 7 with the remaining four screws, washers and nylock nuts.



Tighten all screws. Position the GPS adapter in your desired position. Figures 8,9,10 show various positions that the GPS adapter can be placed in. Put your GPS mount on the adapter when positioning.

