



# TOURATECH

TOURING RALLYE RACING TECHNOLOGY



Juli 2004

## 01-044-0360-0

### Installation Instructions Aluminum Cylinder Head Guards R1200GS

#### Contains:

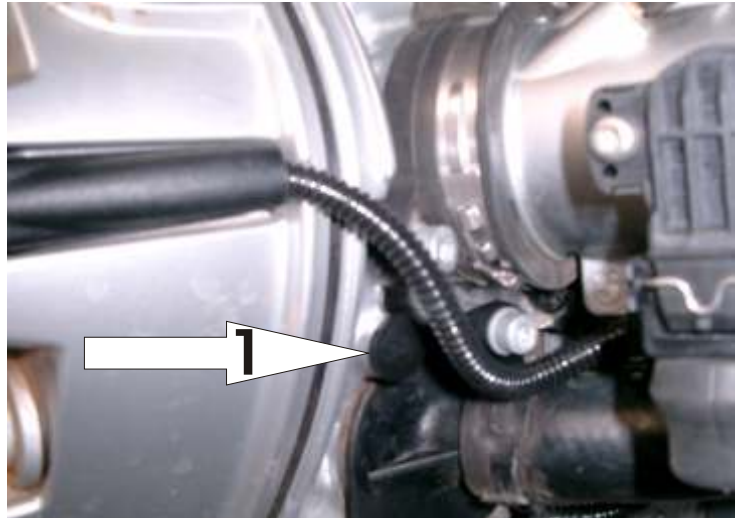
- 1 x premounted cylinder head guard right
- 1 x premounted cylinder head guard left
- 2 x aluminum spacer
- 2 x aluminum washer 3mm
- 6 x washer M6
- 2 x hex screw M6X16
- 2 x hex screw M6x20
- 2 x hex screw M6X25

#### NOTE:

**Do not tighten the screws until you have completely set the cylinder guard on the cylinder head!**

#### Installation:

Remove the marked screws.  
Carefully remove the plastic cover of the thread hole by turning, not pulling it out. See the first photo.  
044-0360 Alum. Cylinder Head Covers





# TOURATECH

TOURING RALLYE RACING TECHNOLOGY

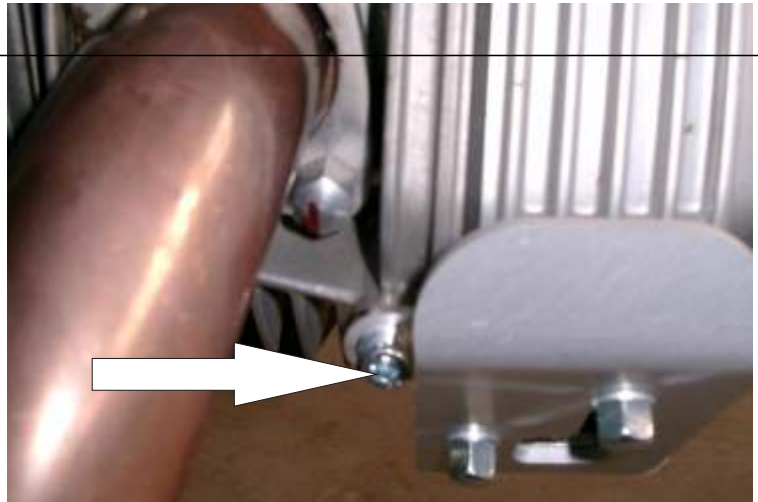


Juli 2004

01-044-0360-0

## Installation Instructions Aluminum Cylinder Head Guards R1200GS

Set the cylinder head guard over the cylinder head and attach it in front with M6x16 screw and a washer as shown in the top picture.



Attach the cylinder head guard at bottom rear with M6x20 screw, washer and 3mm alum. spacer (spacer between the cylinder head guard and the cylinder head). Middle photo.



Attach the cylinder head guard now in top rear with M6x25 screw, washer and a aluminium spacer (spacer between cylinder head and cylinder head guard).

Tighten all screws to max 10Nm.

Left and right side installation is identical.

