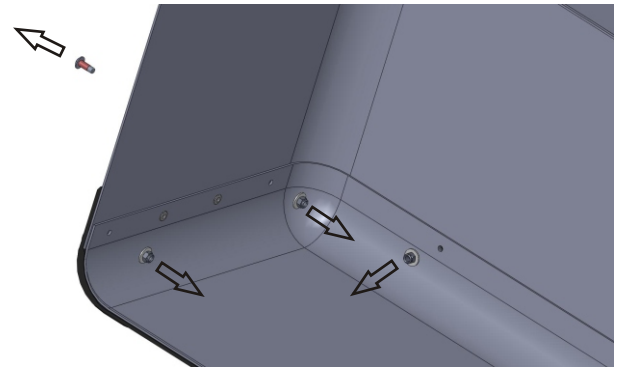
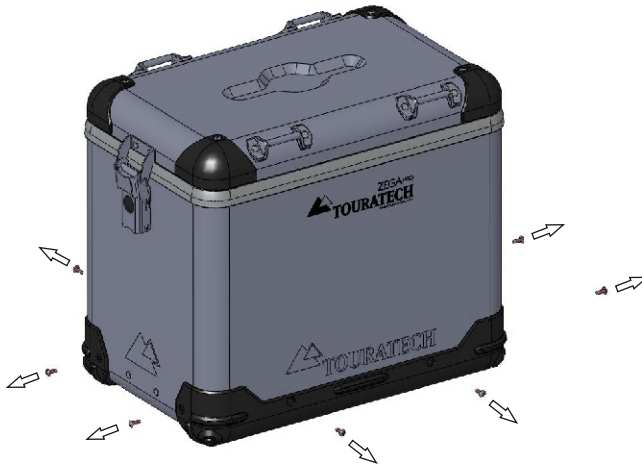


Anleitung Montage Kunststoffschiene Zega Pro

DE20080314

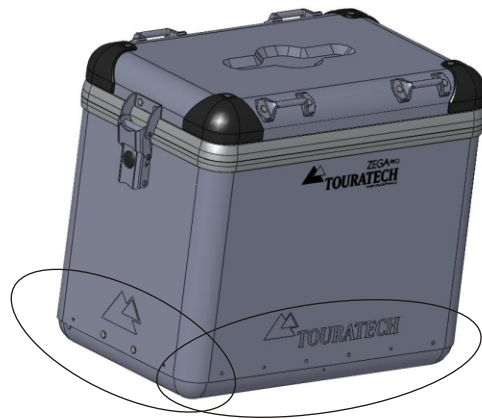
April 2010



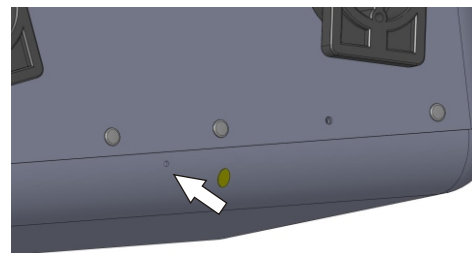
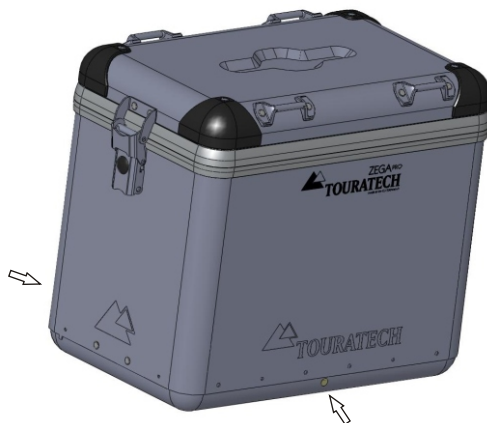
Anleitung Montage Kunststoffschiene Zega Pro

DE20080314

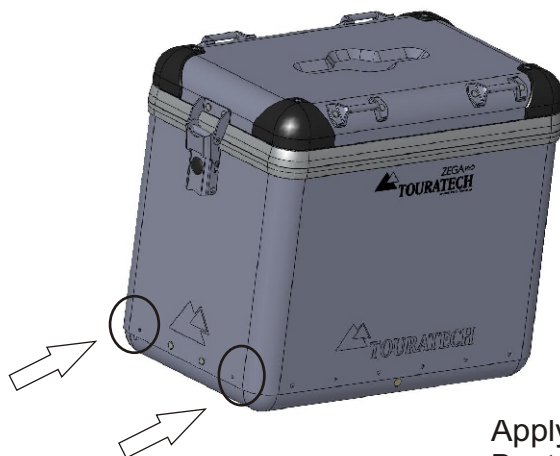
April 2010



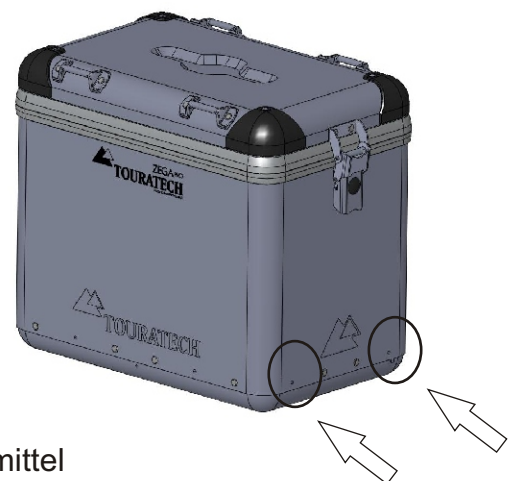
Clean with Methylated spirit
Reinigen mit Spiritus



Apply membrane to 3mm hole in the bottom
Membran auf die 3mm Bohrung im Boden aufkleben



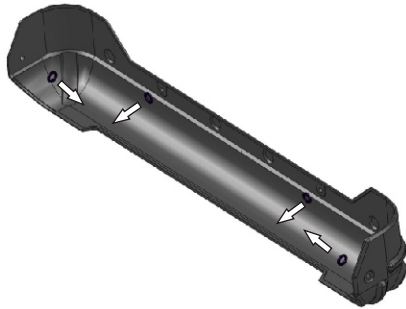
Apply with dish liquid
Bestreichen mit Spülmittel



Anleitung Montage Kunststoffschiene Zega Pro

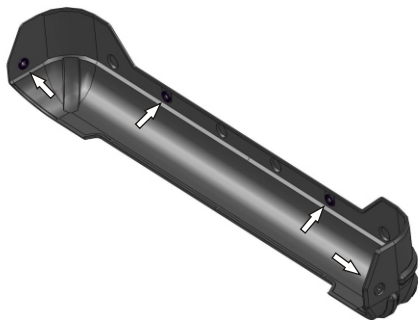
DE20080314

April 2010



Remove seal
Entfernen der Dichtung

Clean with Methylated spirit
Reinigen mit Spiritus

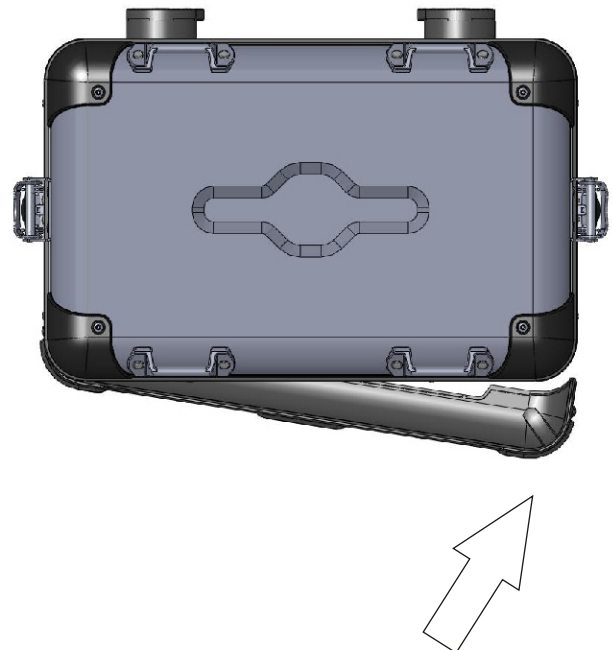


Apply with new seal
Neue Dichtringe aufkleben



Fix to hole
Schiene über Bohrung

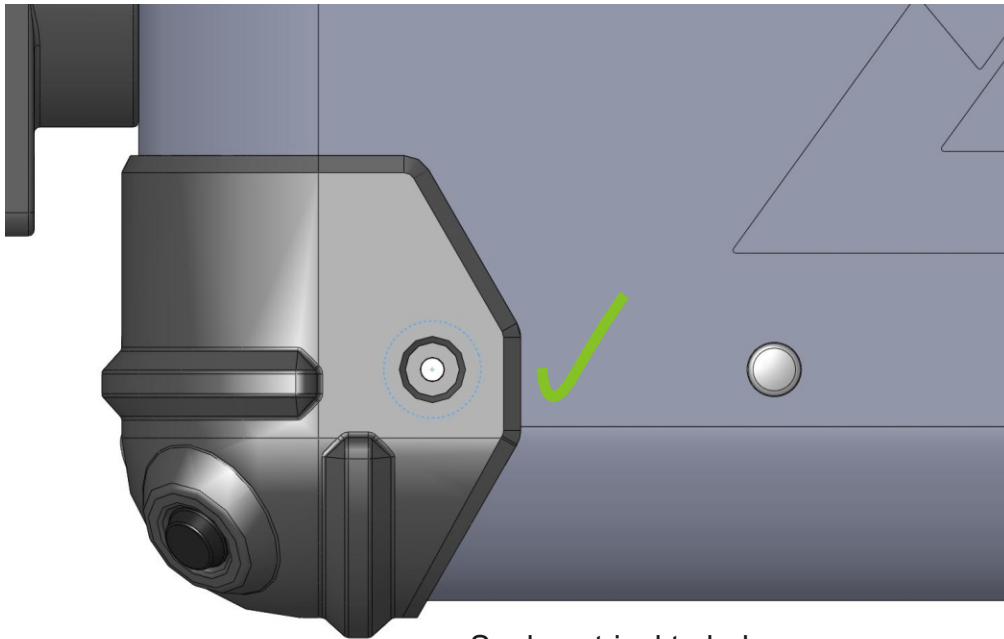
Rotate
Schwenken



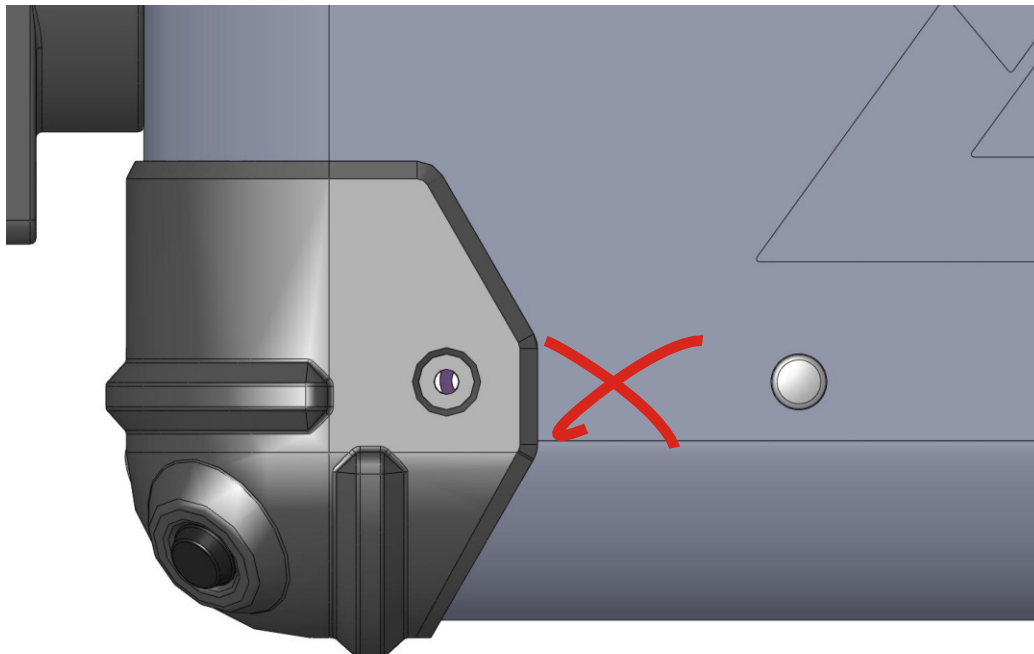
Anleitung Montage Kunststoffschiene Zega Pro

DE20080314

April 2010



Seal central to hole
Dichtring zentrisch zur Bohrung



Seal not central to hole
Dichtring nicht zentrisch zur Bohrung